



robin wolf studio

fine handcrafted copper and mica lighting fixtures



robin wolf studio

fine handcrafted copper and mica

www.robinwolfstudio.com



Coleman Entryway Wall Pendant



Prairie style chandelier with deep overhangs, clear silver mica and "window pane" detail.

This roof shows a prime example of the hand-waxed, natural fire patina that is a signature of Robin Wolf Studio. Illuminated by 4 LED bulbs.

Measures 28" x 28" x 15"



Bottom View



This custom lighting fixture was created for a lodge-style home designed and built by Scott Coleman Homes in Edmond, Oklahoma.

The two tier Prairie Style design with Southwest detail work incorporates lighting in both levels of the fixture, illuminating the hand-waxed natural fire patina on the lower copper roof.



Bottom views show the detail work of the hand hammered copper. Access to the interior sockets is through the center panel of the bottom pane.

Measures 20" x 20" x 19" and weighs 34 pounds.



Bottom View



Bottom View



14" x 14" x 8" Ceiling Mount.

The clear silver mica of this ceiling mount fixture is illuminated by 4 LED lights. Access to the bulbs is through the removable bottom panel.



24" x 48" x 7" Ceiling Mount.

Clear silver mica with amber mica highlighting the corner "window pane" design. This fixture is illuminated by a 24" x 48" LED flat panel light to give even glowing light in all directions.



Close up view of corner details and construction



8 panel chandelier with hammered copper details. Shown with clear silver mica, it is lit with 4 LED bulbs, I can create custom detail designs to compliment architectural elements of your home or office upon request.



Bottom View



Detail



Small square pendant with
amber mica, lit by a single
standard socket.

Measures 8" x 8" x 10"

Rectangular
pendant with clear
silver mica.

Illuminated by 2
standard sockets

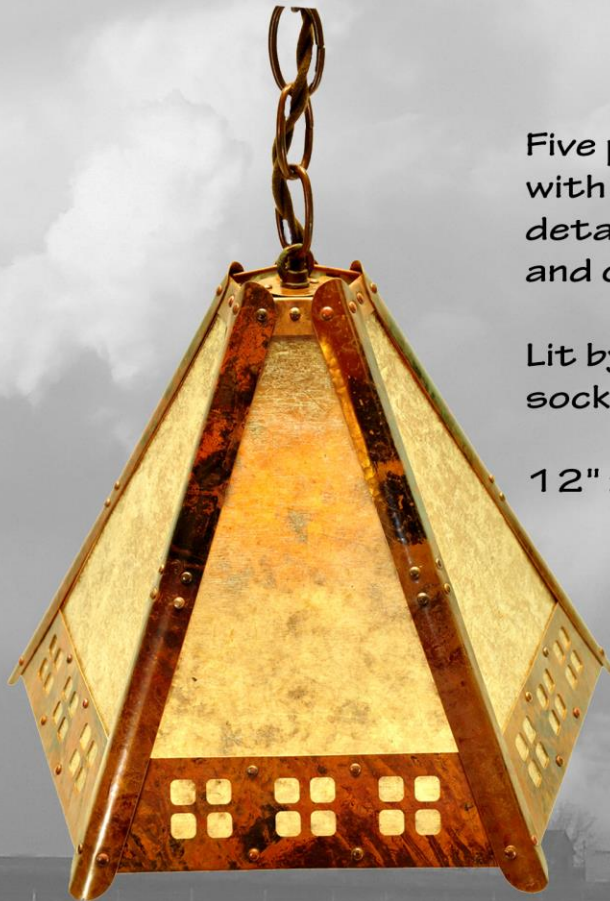
Measures 14" x 8" x



Five panel pendant
with "window pane"
detail
and clear silver mica.

Lit by a single standard
socket.

12" x 12" x 10.5"



interior view



Four panel pendant with
amber mica. I consider this
my "simple" style, with no
added design features.

Lit by a single socket.

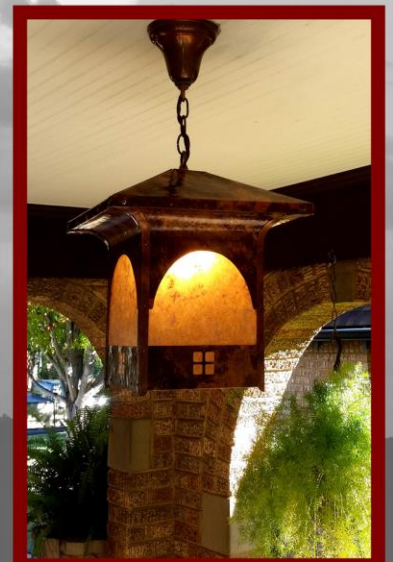
Measures 7.5" x 7.5" x 10"



Arched pendant with "window pane" detail and clear silver mica. Illuminated by a single standard socket.

This fixture and it's matching wall sconce on the previous page were designed to complement the architectural details of this 1920's Tudor home in Oklahoma City.

Measures 13" x 13" x 18"

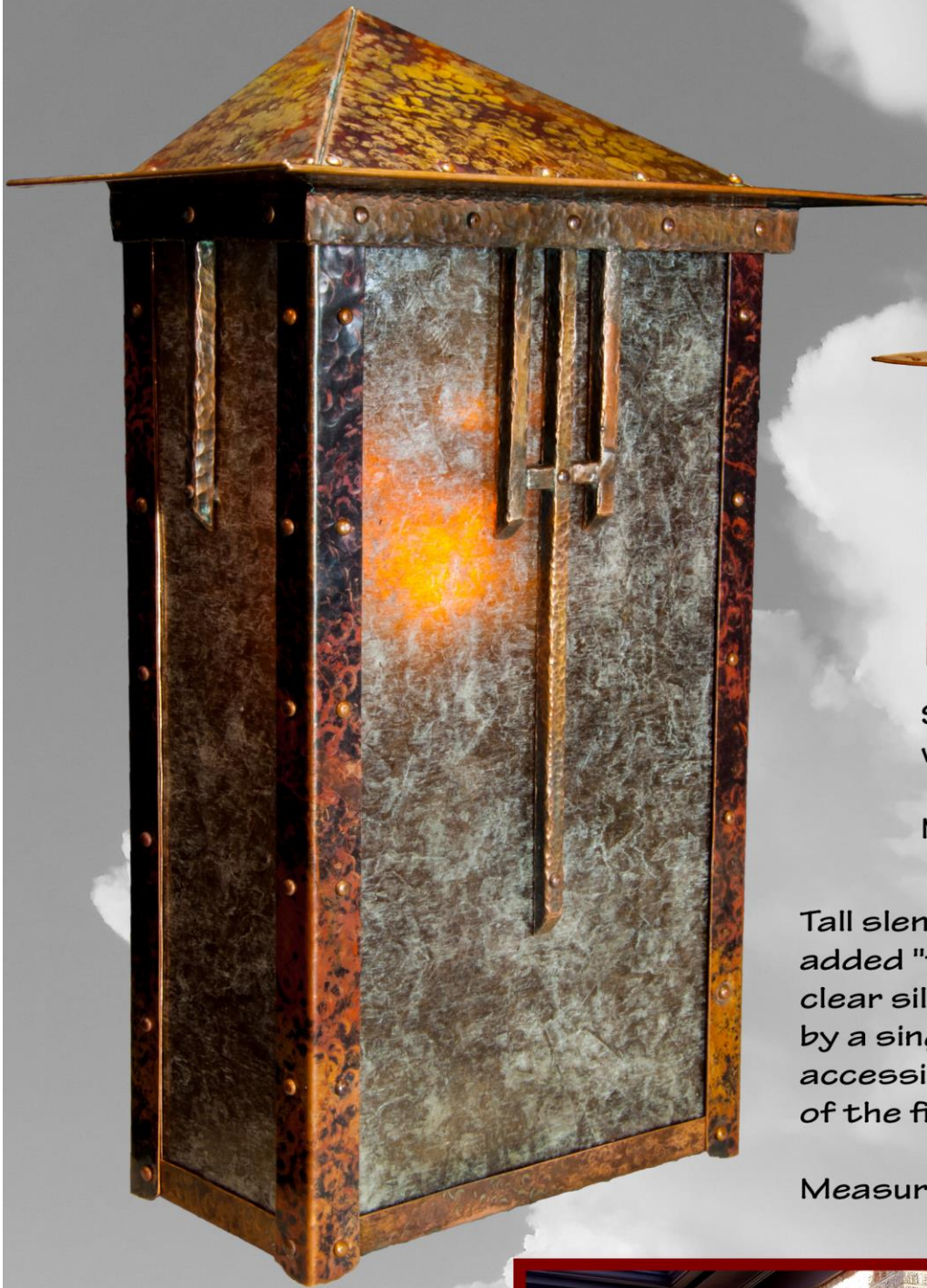




Arched wall sconce with clear silver mica and "window pane" details (matches the arched pendant on the following page). This pair of fixtures were designed to complement the architectural details of a 1920's Tudor home in Oklahoma City.

This fixture uses a single socket that is accessible through a removable panel on the bottom.

Measures 13" x 7" x 18"



Small square wall sconce with clear silver mica.

Measures 8" x 5" x 10"

Tall slender wall sconce with added "trident" details and clear silver mica. Illuminated by a single socket that is accessible via the open bottom of the fixture.

Measures 9" x 5" x 14".





Custom ceramic lamps with copper and mica



**Tamarack with three pendants.
42" x 11" x 30"**

Total hanging length and distance from pendants to branch is adjustable to fit individual installations



**Burled tamarack branch with three pendants,
5 panels on each pendant.
77" x 12" x 30"**

Total hanging length and distance from pendants to branch is adjustable to fit individual installations



Tamarack branch with three pendants.
Each pendant has 5 panels with extra detail work.

56" x 12" x 30"

Total hanging length and distance from pendants to branch is
adjustable to fit individual installations



Wide ceiling mount with double connections
showing the hand-waxed, natural fire patina.



Natural tung oil finish on tamarack branch.



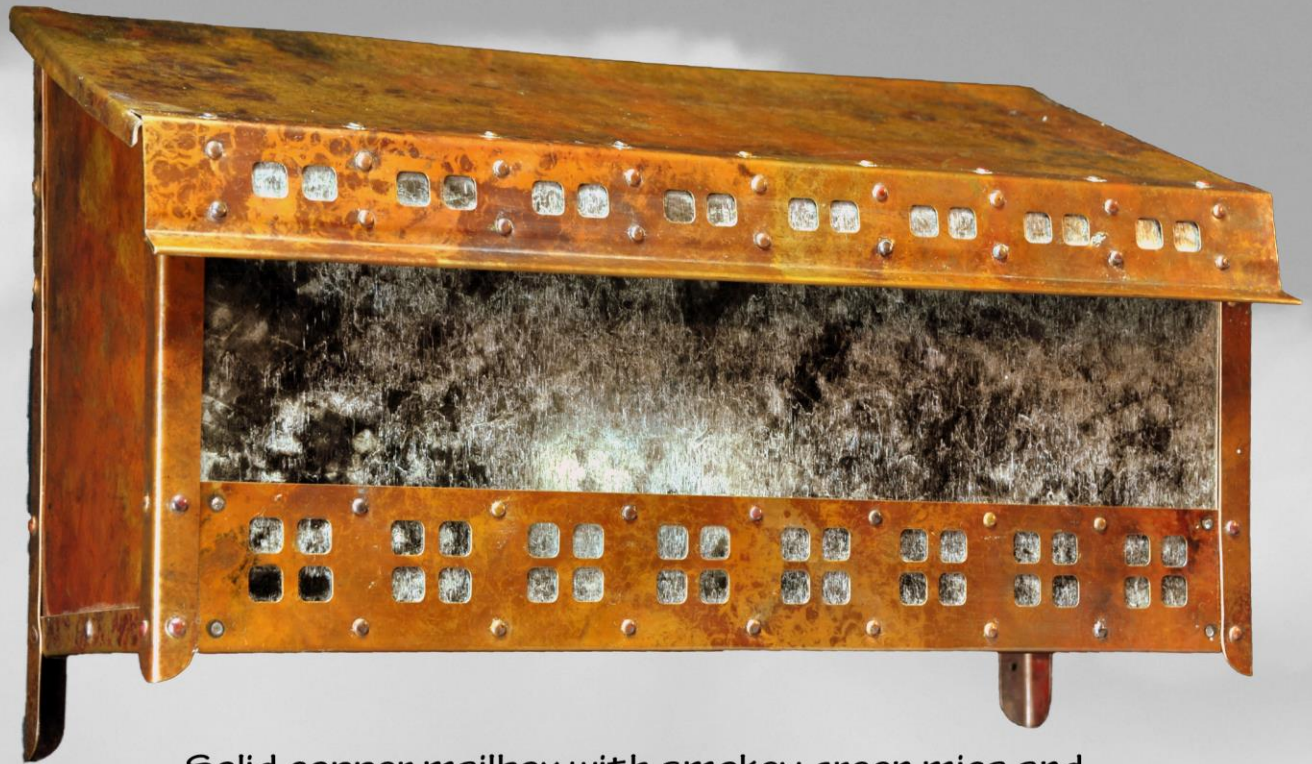
Tamarack with three pendants.
42" x 11" x 30"

Total hanging length and distance from pendants to branch is adjustable to fit individual installations



Burled tamarack branch with three pendants,
5 panels on each pendant.
77" x 12" x 30"

Total hanging length and distance from pendants to branch is adjustable to fit individual installations



Solid copper mailbox with smoky green mica and "window pane" details.

NOTES



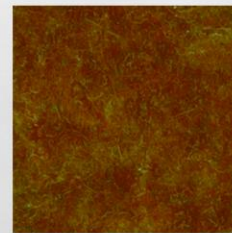
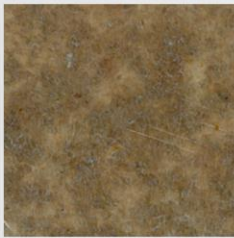
As a self-taught coppersmith, my journey with copper has been unusual, at one point being co-owner of a plumbing, heating and air business in the 1980's. That is where I learned to solder a copper joint and layout/construct basic sheet metal forms for ducting and ventilation. As my life changed as I neared 50 and had my 3 daughters off to college, I found myself spending my spare time teaching myself the art of making functional pottery. I had made a beautiful jar with a clay lid, when I broke the lid I refused to waste the jar. I found a piece of 100-year-old copper flashing that was salvaged from an old farm house, and I cut a piece out of it to make a new lid for the jar. I watched a few YouTube videos to learn how to work the copper sheet and was hooked with how the copper lids complimented the colors and forms that I was already making. From there on, all my lids became simple hammered copper domes with a natural fire patina and a handle made of native woods or antlers.

The Western Design Conference in Jackson Hole, Wyoming is billed as the "Preeminent Functional Western Art Show in the Nation". On my first juried acceptance into the show in 2011, I was awarded "Best in Class for Home Accents" for a grouping of my functional pottery with copper lids and antler handles. While in Jackson that September, I saw an original 1912 Dirk Van Erp copper lamp with it's original copper and mica shade that was displayed by Fighting Bear Antiques of Jackson, Wyoming (www.fightingbear.com) Needless to say, I was awe struck by the craftsmanship the lamp embodied, and it changed my creative path from that point forward. As soon as I returned home I started researching copper lighting, set about teaching myself how to work the copper and mica, drawing up designs and formatting my patterns. I feel that my copper designs reflect Craftsman, Mission, and Prairie design influences with a bit of Mother Nature mixed in.

Mica Colors, Hanging Options, Mounts and Details

Mica Colors Available

I make use of 3 basic colors of mica. Clear Silver allows the greatest amount of illumination, Smokey Green is next, and the classic Amber is the most opaque, giving off a beautiful warm glow.



Hanging Options

Pendants and chandeliers can be suspended by either a copper finished chain, or by solid copper rods. Previous images show both options. See page 4 for a good example of hanging rods and ceiling mount, and page 13 and 17 for a good view of pendants using a chain for suspension. Please read the following pages to determine the length of suspension material you will need.

Pendant Ceiling Mounts

All hanging pendants and chandeliers include solid copper ceiling mounts. Individual pendants have a choice of 3 mounts with varying depths. All fixtures should be installed by a licensed electrician.



1 1/16" x 5"



1 7/8" x 5"



4" x 5"

Specifications & Recommendations

Wattage & Bulbs

LED bulbs required in all fixtures, your choice of lumen strength. I recommend oversizing the bulbs and using dimmer switches to control the lighting fixtures.

Rating

All electrical components are UL Listed for dry locations, unless damp location usage is specifically required.

Hanging Height and Sizing Recommendations

The standard ceiling height (particularly in homes built in the 40's to the 90's) is 8' high. The 2nd most popular ceiling height is 9' and from there - the sky is the limit (literally) so here's some numbers to help you figure out the right height for you light.

The Right Height to Hang a Dining Room Fixture / Chandelier

8' ceiling 32" - 36" between the top of the table and bottom of fixture

9' ceiling 36" - 40" between the top of the table and bottom of fixture

10' ceiling 40" - 44" between the top of the table and bottom of fixture

For every foot of ceiling height beyond 8', add 3" to the length of your chain/wire.

if your ceiling is extraordinarily high (like an 18 footer) then the light should hang approx. 5' from the ceiling (meaning 5' of airspace.)

Sizing for a Circle or Oval Table

42" wide Your light would be approx. 18-20"

48" wide Your light would be approx. 24"

Another way to think of it is to choose a light that is approx. 1/2 to 2/3 as wide as the widest part of the table. In the end, both measures will be about the same.

Square or Rectangle Table

If your table is a square or rectangle and you want to choose a rectangular fixture, I would lean on the 'smaller' end of the scale and choose a fixture that was approx. 1/2 the width of the table and approx. 1/2-2/3 as long.

42" x 42" Your light would be approx. 20"

42" x 78" Your light would be approx. 20" x 54"

Chandelier Ceiling Mounts

Chandeliers have handcrafted solid copper mounts that cover a steel support base. Depending in the size, weight and configuration of the fixture, the ceiling mount will have the appropriate number of hanging loops and connectors (one, two or four hangers). All fixtures should be installed by a licensed electrician.



Detail Work

What I refer to as "detail" is any added adornment other than the standard structure of the fixture. This includes any decorative openings in the copper, or added solid copper pieces that are added to enhance the appearance of the fixture. I have standard detail designs, and I am always open to creating a design that is reflective of architectural details of your building.



The Right Height to Hang Wall Sconces

The standard is 66"-72" from the floor. In a hallway, I lean towards the higher end, whereas in a bedroom (like above bedside tables) I lean to the lower end of the scale.

For sizing, you have a lot of flexibility with wall sconces and there is not a set guideline. However, here's some food for thought...

- If you have a tall wall, consider an overly long wall sconce
- Don't just pay attention to the height of a fixture, also note the depth as some sconces stick out quite far which can look awkward down a hallway

The Right Height to Hang Pendant Lights Over an Island or Peninsula

If you are hanging pendants over an island or peninsula then you should have approx 30" of airspace between the bottom of your fixture and the top of your counter surface.

How Wide /Big Should a Pendant Light be Over an Island or Peninsula

There's a lot of room to move with this one and usually bigger is better. Here's some basic guidelines to get you started...

- The pendant light should sit at least 10-12" in from the widest part of your counter top. So, if your island is 3' wide you'll want the pendant to be no bigger than 12".
- Don't cram too many pendants in, while it's all relative to the size of the pendant there should be 'approx' 30" in between bulbs. If your pendants are extraordinarily large, consider 36" between bulbs.

Hanging a Light in an Entryway or Foyer

You should have 7' of clearance (minimum) from your floor to the bottom of your light if you have a 1 level entryway. If you have a 2 story entryway, you don't want the light hanging below the 2nd story (make sure it's above the 1st story's air space)

How Big Should it be?

An easy way to come up with a number is to take the width of your room and add it to the depth of the room. So if you have a room that is 10 feet wide and 12' long you'll do $10+12=22$ ". There's your light size, approx. 22"

Thank you to Kylie M. Interiors for these measurement recommendations



Each piece of copper and mica is hand cut, hand formed and hand finished by the artist, Robin Wolf. Each edge of every piece is sanded and buffed to a smooth finish, then hand waxed to preserve the natural fire patina created when the copper is tempered and hammered. After the copper pieces are hand formed to fit each specific part of the shade, each individual hole is hand drilled, each rivet is hand placed, then the copper and mica are bound together, forming each individually crafted piece.

The goal of Robin Wolf Studio is to provide you with a piece of functional art that you, your family and friends will treasure and make use of for many years to come.

Robin Wolf Studio
19779 East 760 Road
Kingfisher, OK 73750
(405) 368-0919

www.robinwolfstudio.com